



Annual Report

2021/2022



Winnifred Stewart

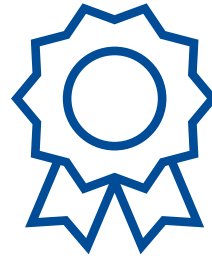
S.T.R.I.V.E. FOR OUR

CORE VALUES



SAFETY

We take responsibility for our own safety and those around us.



INTEGRITY

We are committed to doing the right thing for the right reason, regardless of the circumstances.

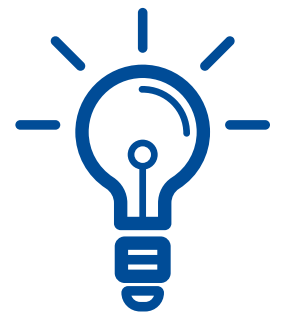


TRUST

We will ensure trust by being reliable, fair and building strong relationships in our community.

VISIONARY

We will honour those who came before us by continuing to advocate for a fully inclusive community.



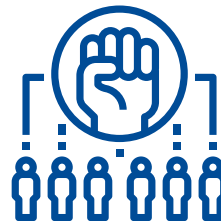
RESPECT

We will respect and value each other's culture, experience, and opinions while embracing diversity.



EMPOWERMENT

We are committed to empowering individuals, families, employees and stakeholders to participate in the continued growth of our organization.



VISION

To support individuals with developmental disabilities to meet their potential and have full lives in an inclusive, supportive community.

MISSION

WSA supports and responds to the goals of the individual, their families and friends by providing services that honour choice; community inclusiveness and quality of life for the individual.

Message from the Winnifred Stewart Association Chairperson



What does Perseverance Look Like?

Perseverance is continuing to work towards a goal even if there is a delay in getting it, or a difficulty in achieving it. What does Perseverance Look Like? – It looks like the community of Winnifred Stewart; the outstanding team of Managers, our tireless staff, our Donors, our Volunteer Board Members, and most of all, the Individuals and Families we serve.

It was my privilege to serve as the Chairperson of the WSA Board this past year, and bear witness to how a community comes together during unprecedented challenge. I had a chance to visit with frontline staff in residences that were under isolation from COVID. I saw how our Management Team came together for common purpose when our past Chief Executive Officer resigned, just before Christmas. I wish to thank the Management Team for ensuring that we had the time needed to identify our new Chief Executive Officer, Emily Ruttan.

I want to thank the staff of Winnifred Stewart for their courage and dedication. Much was asked of you this past year, and we deeply appreciate the personal sacrifices you made in support of our Individuals.

I was also very pleased to see the WSF and WSA Boards come together in support of the staff and Management Team. Whether it was through the work of our joint board Ad-Hoc Committee looking at our organizational structure and the dynamics that exist when you have two Boards and a Management Team, as well as the joint Board Executive Search Committee who understood the vital importance of getting the right person for the role of Chief Executive Officer.

I give thanks to the work of our volunteer boards. Their willingness to provide energy, passion and support to the mission of Winnifred Stewart is an inspiration.

In closing, I want to thank Robert Willmott for his work as Chairperson of the WSF these past two years. The opportunity to rise to change was made significantly better, having Robert to work with this year. I look forward to a new year with Emily and a bright future.

A handwritten signature in black ink, appearing to read "Gord Rajewski". The signature is fluid and cursive, with a long, sweeping underline.

Gord Rajewski,
Winnifred Stewart Association Chairperson

2021/2022 Association Board

President – Gord Rajewski
Treasurer – Leon Pfeiffer
Secretary – Stan Fisher

Chief Executive Officer
Sue Gilchrist (Outgoing)
Emily Ruttan (Incoming)

Directors
Chad Zima
Jaclin Cassios
Kevin Guile
Malinda Ivankovic
Paul Goguen
Steve Kwasny

Message from the Chief Executive Officer



Winnifred Stewart was a trailblazer. She was a woman on a mission who fiercely advocated for those that did not have a voice. This is one of the reasons that I am absolutely delighted to have started my role as Chief Executive Officer of both the Foundation and the Association on May 16, 2022. I met so many people connected to this organization before I started and during the first few weeks of being Chief Executive Officer. And one thing is clear, EVERYONE I meet is behind the legacy, opportunity and vision of Winnifred Stewart. There is opportunity in "spades." We will continue to harness that opportunity together.

HOPE is a powerful way to mobilize a community. Now more than ever our community needs HOPE and connection after our experiences during the COVID 19 pandemic. Many of us have become isolated from our communities and while the pandemic is not over, we are entering a new stage. The individuals we serve and the teams that support them each day have demonstrated incredible GRIT. Each of them has shown grit because despite having overcome incredible challenges, they have held steadfast to our vision of opportunity for all. For this, I am so grateful.

A dear friend of mine says that HOPE stands for: Heart Open Possibilities Endless. As we move into 2022/23 year, we will be exploring what HOPE means in the context of a new vision for our organization. I'm so excited to do this with you. This makes me think of our friend Joey Moss. It is so clear to me that he inspires HOPE, connection, and opportunity for all. More than ever, we must seek connection to build a full and rich life for all.

I believe that a strong foundation is built on gratitude. I am so grateful to every team member at Winnifred Stewart for their commitment to the individuals we serve. My predecessor, Sue Gilchrist, invested her heart into this organization and I am humbled to build on her work. I know the Boards have also really invested in supporting and leading Winnifred Stewart over the last year. I cannot wait to get to know each Board member. And finally, where would we be without our donors, our sponsors, parents, guardians and friends of Winnifred Stewart- you continue to amaze us with your generosity, and for that we're eternally grateful.

The future is bright for Winnifred Stewart.

Emily Ruttan,
Chief Executive Officer

2021/2022 Management Team

Chief Executive Officer

Sue Gilchrist (Outgoing), **Emily Ruttan** (Incoming)

Candace Smallwood – Director of Development & Communications

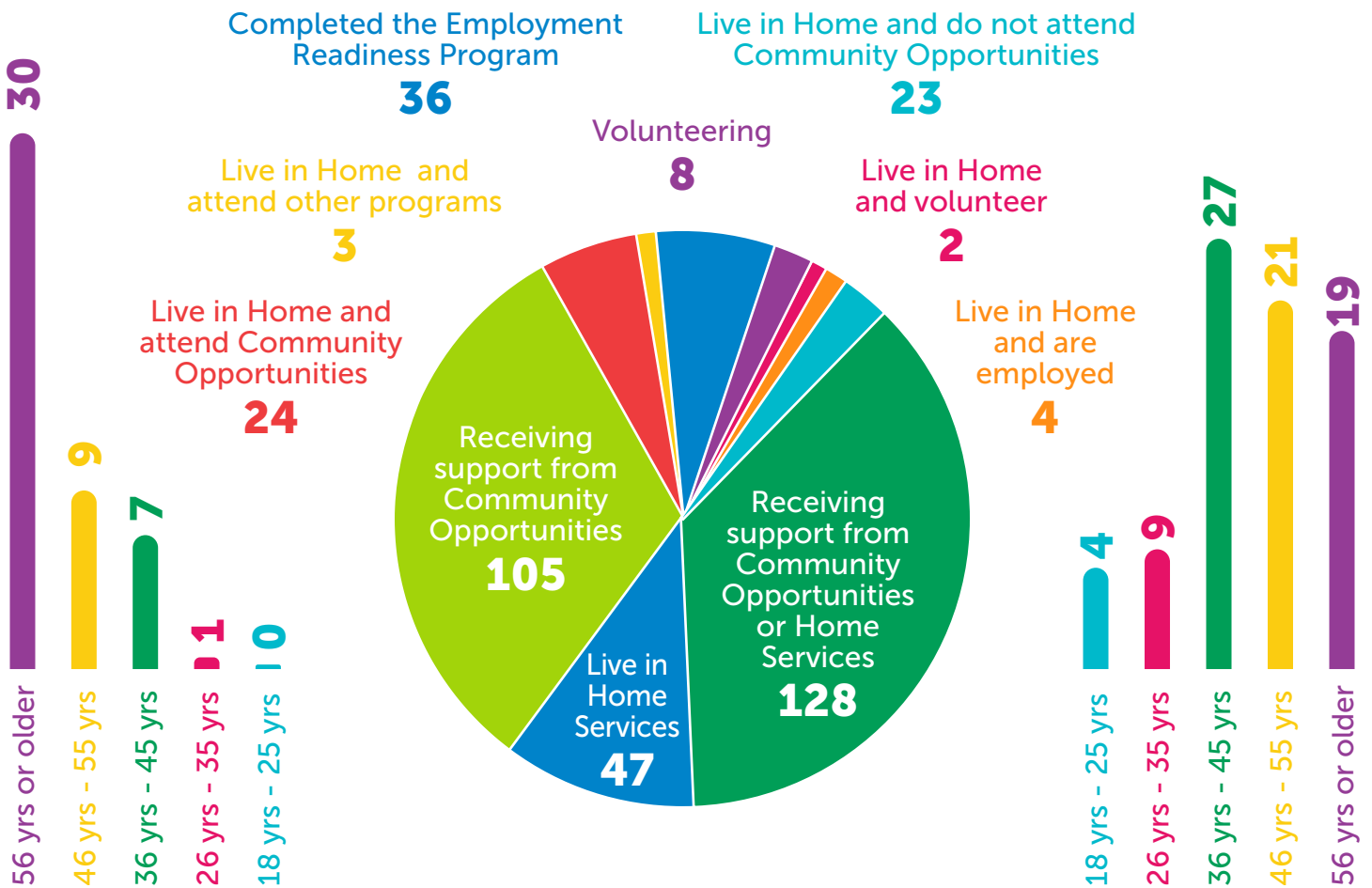
Corinna Yakimowich – Director of Community Opportunities

Jennifer Deck – Director of Finance

John Alexander – Director of Business & Operations

Veronica Ferdinand – Program Manager, Home Services

Demographics



Age Groupings:
Home Services
47 People



Age Groupings:
Community Opportunities
105 People

Employees

Full Time **122**
Part-time **17**
Relief **54**



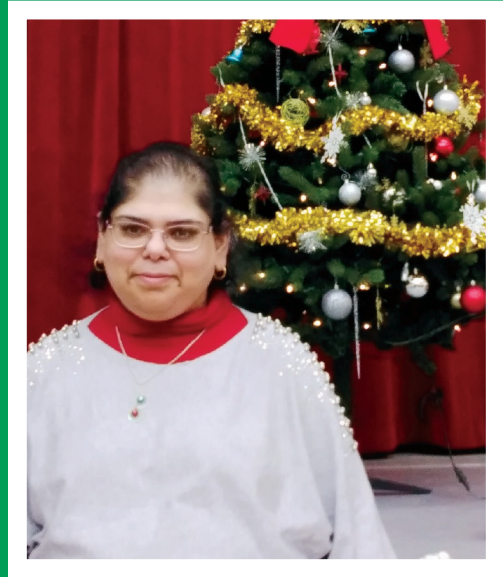
Celebrating Staff Years of Service

- Less than 5 years – **104**
- 5-10 years – **42**
- 15-20 years – **30**
- 20-25 years – **20**
- 25-30 years – **12**
- 30-35 years – **6**
- 35-40 years – **2**

277,499
Direct Support Hours

That's
31.67 years
worth of support hours!





Your Support is Changing Lives!

Your support of Winnifred Stewart over this past year (and the many years prior) has truly made a difference in the lives of Albertans with disabilities.

Whether providing support for people seeking gainful employment that provides a real sense of belonging and purpose; empowering people to express their talents and skills within our Community Opportunities program; or helping us ensure safe, inviting living accommodations that allow people to remain as independent as possible, your support makes a true difference in people's lives.

Thank you for continuing to partner with us to ensure people with developmental disabilities in our community can have the quality of life we all deserve.



Association Year in Review

2021/22 was another year of adapting to change, yet our community and supporters held us together.

2021/22 was another year of adapting to change, yet our community and supporters held us together.

As the COVID-19 pandemic posed a challenge to many of our programs and services, we continued to navigate through difficult times with prosperity.

We saw new ways to create meaningful programs within our Community Opportunities program (formerly Day Services), empowering participants to explore and express their creativity through music, arts, technology and even horticulture. The feeling of joy and accomplishment throughout our building is breathtaking!

Since the creation of our Mindful Hearts program in 2011, Winnifred Stewart has been working hard to create our first Mindful Hearts memory care supportive living facility, to provide specialized support for individuals experiencing Alzheimer's and other dementias.

A dream of over 10 years in the making, although not what we had originally planned, is finally coming to life, thanks to the hard work and dedication of our supporters!

Our current "Joey's Home" was built in 2007, providing 8 supportive living spaces on the main level, 4 independent living apartments on the 2nd floor, and office space on the basement level.

To meet the growing need for specialized memory care, the retrofit project of Joey's Home will replace the apartment suites and office area, creating a total of 17 spaces for people with disabilities who are experiencing dementia.

With the project expected to be complete in the Fall of 2022, we continue to raise support to fund the cost of the construction, and for future Mindful Hearts Memory Care Centres to continue to meet the needs of our community. Thank you to everyone who has been involved in making this dream a reality, including our Presenting Sponsor from our fundraising galas, Krawford Construction, and the Winnifred Stewart Foundation.

Building community partnerships has always been at the heart of Winnifred Stewart. On the International Day of Persons with Disabilities, December 3, Winnifred Stewart, ABC Head Start Society and Community Options celebrated their partnership with the announcement of the renaming of the Westmount location (formerly Winnifred Stewart School) as the *Centre for Community Inclusion*.

Along with the three pillar organizations, the building is also home to community programs offered by Autism Edmonton, Alberta Cerebral Palsy Association and the Paralympic Sports Association.

Partnership and co-location have enhanced the diversity and available resources to families and individuals, but more importantly, better integration of lifelong supports for Albertans and Edmontonians with developmental disabilities.

It allows for collaboration in funding opportunities and increased efficiencies for all three organizations.

The Centre for Community Inclusion partners look forward to offering more opportunities to collaborate with the community and open the doors as a resource to the broader public.

Thanks to a grant provided by the Alberta Government, Alberta Works Program, and the Joey Moss Memorial Fund, we have received funding to create an employment training program called the *Joey Moss Memorial Fund, Employment Readiness Program (ERP)*, for people with disabilities.

Participants of the Employment Readiness Program complete the 10-week program with an inventory of industries they are interested in; knowledge of how and where to look for job opportunities; an updated resume and cover letter template; interview skills and experience; and basic First Aid, WHMIS and Food Safety certifications. We also offer ProServe (Alberta Liquor Sales Program) for individuals who choose to pursue this certification.

Participants who complete the program will also have four weeks of valuable work experience in one of the chosen fields offered.

Through the combination of job-hunting preparation and work experience, participants will be ready to begin their job search to start their career with renewed self-confidence, knowledge and experience, with the support of our employment placement specialists.

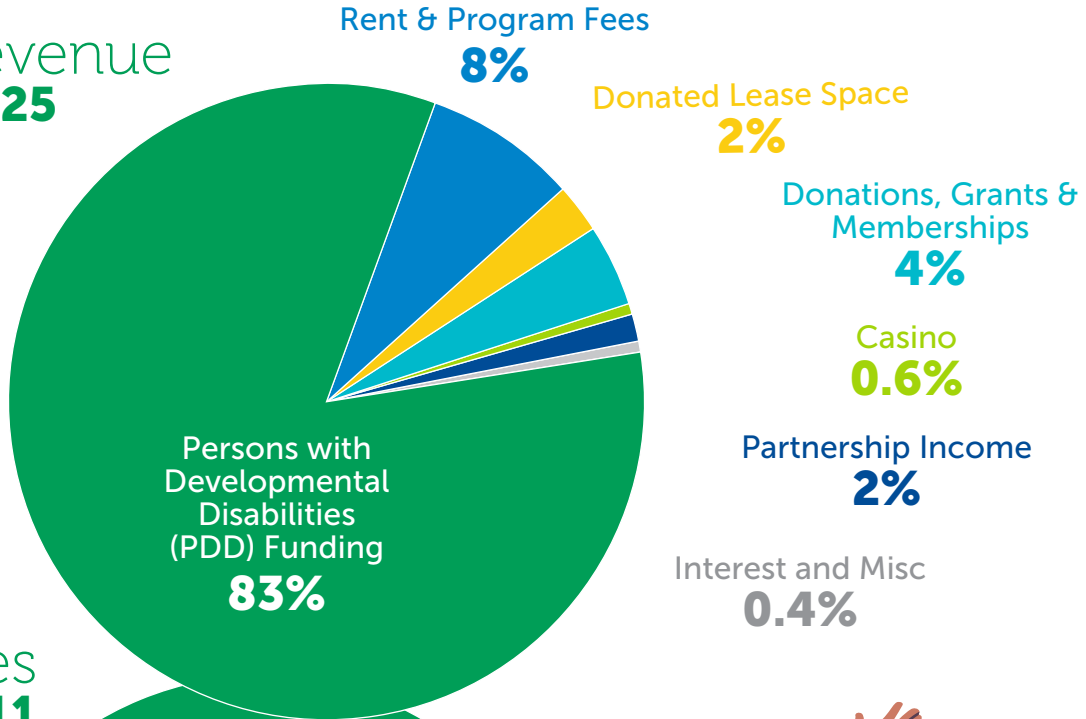
In December 2021, Chief Executive Officer Sue Gilchrist departed from Winnifred Stewart. Sue served the organization since 2018, and made a significant and positive impact on the culture and organizational structure during her time here. We thank Sue for all she gave to Winnifred Stewart.

After an extensive search, we were delighted to welcome Emily Ruttan as Chief Executive Officer in May 2022. Emily comes to Winnifred Stewart with diverse leadership experience that shares a common thread: harnessing the power of community to address complex challenges and make a positive impact. She is truly thrilled to join WS after building on her program delivery and leadership strengths at the Government of Alberta, the University of Alberta, the City of Edmonton, and, most recently, Homeward Trust. Emily's roots are in education - as a teacher in remote communities in Northern Alberta. Her roots and outlook on community are behind her belief that we can inspire hope daily to galvanize community and achieve meaningful impact.

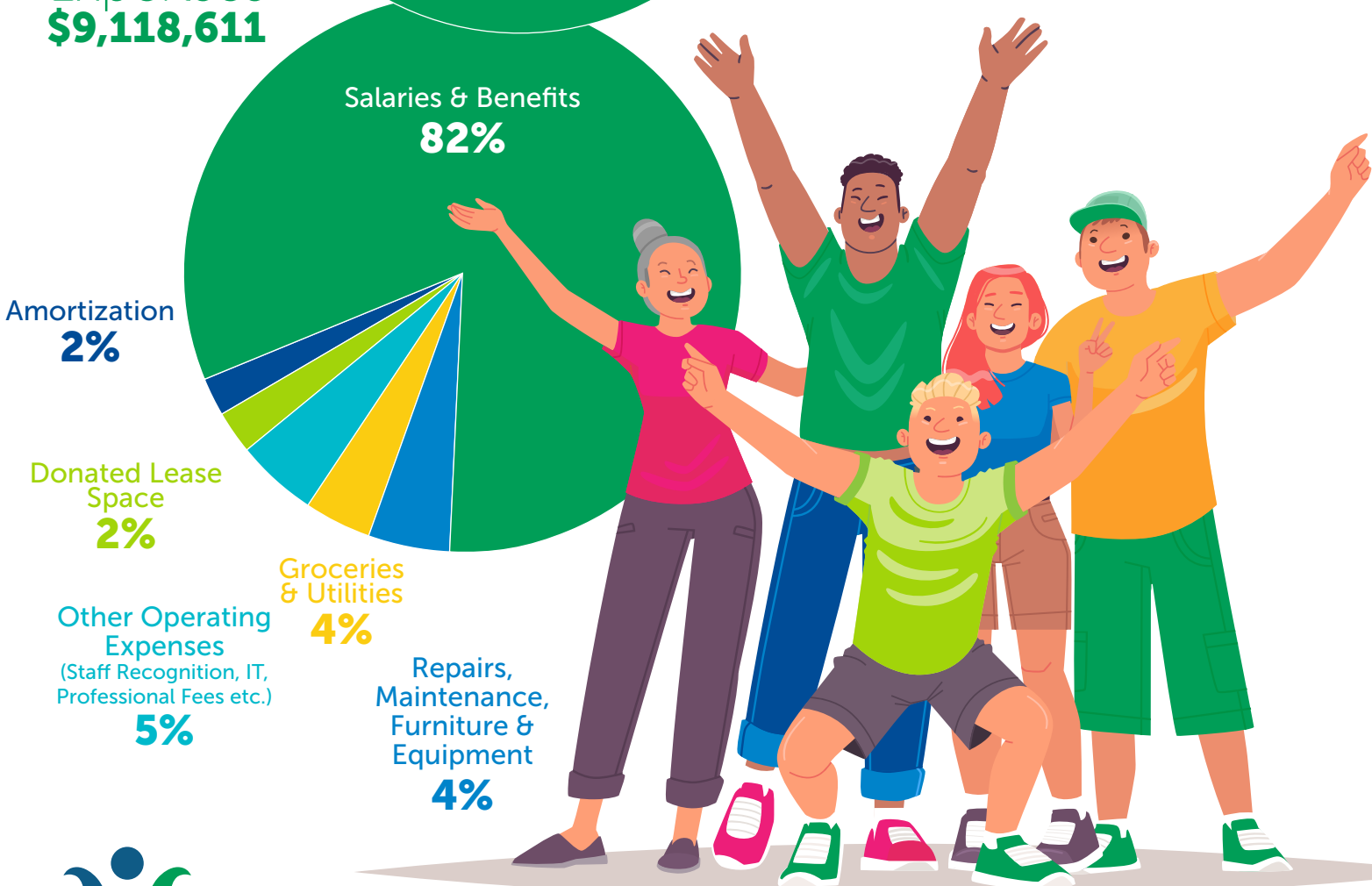
We look forward to the opportunity for Winnifred Stewart to meet Emily at upcoming events as we continue to make an impact on the lives of people with developmental disabilities in our community!

Winnifred Stewart Association 2021/2022 Financial Results

Total Revenue
\$9,349,925



Expenses
\$9,118,611



Winnifred Stewart

For full Audited Financial Statements, please visit our website

www.Winnifredstewart.com

Message from the Winnifred Stewart Foundation Board Chairperson



We're Humbled by your Support this Year

On behalf of the Winnifred Stewart Foundation, I would like to thank all donors, volunteers, Empties to Winn donors, staff, and management for all you have done for Winnifred Stewart.

Despite continued uncertainty and challenges that the pandemic has brought us, the Winnifred Stewart Foundation is very proud to continue to provide substantial support to the Winnifred Stewart Association this year.

Continued commitment from the Edmonton Elks Football Club and the Edmonton Oilers Community Foundation is greatly appreciated, and this allows us to support persons with diverse abilities in their desire to lead the fullest life.

Social Enterprise, represented by the Empties to Winn program, has had an excellent year. Thank you to John Alexander and his team for all you have done. I look forward to continued success in the coming year.

Fund Development initiatives, including the Joey Moss Memorial Fund, among others have greatly helped in support of program delivery. Activities, including the Annual Golf Tournament and the Fall Blitz Campaign, represent important fundraising opportunities. Thank you to Candace Smallwood and her team for all their efforts to spearhead this work. These activities, combined with investment returns, enable Winnifred Stewart to serve our community.

Finally, thank you to the members who served on the Winnifred Stewart Foundation Board this year. Your leadership, support and hard work have been instrumental in the success of the Winnifred Stewart Foundation and Association. It is exciting to think about the upcoming year knowing how well our Foundation and Association Boards are working together with our new Chief Executive Officer, Emily Ruttan. The future is truly bright.

Thank you and let's keep up the good work.

A handwritten signature in black ink that reads "Robert Willmott". The signature is written in a cursive style.

Robert Willmott,
Winnifred Stewart Foundation Board Chairperson



Philanthropy at Work

The Winnifred Stewart Foundation was established as a fund exclusively for the benefit of persons with disabilities in the province of Alberta.

Incorporated in 1972 under the Societies Act of Alberta, it works closely with the Winnifred Stewart Association by providing financial support for projects and initiatives aimed towards improving the lives of adults who are supported by the Association. The fund was named after Dr Winnifred Stewart, a recipient of the Order of Canada for her dedication to providing care and support for people with disabilities.

Fundraising by the Winnifred Stewart Foundation works to advance the Winnifred Stewart Association's Mission and Vision and to develop relationships with community and corporate supporters.

The Foundation has been successfully implementing the Strategic Plan and Guiding Principles, with a focus on revenue growth and enhancing brand awareness.

To view the Foundation's full Strategic Plan, please visit our website.

Our Guiding Principles

1 EXPANSION
We continually grow our capacity, resources and prospects

2 LEADERSHIP
We are leaders in our sector and others look to us for direction

3 NIMBLE
We are agile to adapt to changing circumstances and seize opportunities

4 STEWARDSHIP
We steward our assets to consistently and sustainably serve our mission

5 TRUST
We earn the trust and respect of all people we engage with and serve with integrity

6 INNOVATION
We imagine bold ideas that create new opportunities to achieve our mission

2021/2022 Foundation Board

Chairperson – Robert Willmott
Treasurer – Neha Desilets
Secretary – Cory Imppola

Chief Executive Officer
Sue Gilchrist (Outgoing)
Emily Ruttan (Incoming)

Directors
Alyshah Nurani
Doug Lane

Elizabeth Norris-Kartz
Michael Starrett
Sarah Peters

Fundraising and Revenue Generation

Thank you to all of our amazing supporters and donors! Through your generous support and the work of the Foundation, WSA received \$429,000 in funding this past year, through grants, sponsorships, donations, fundraising events and social enterprise, to help support projects for the programs and services provided by the Winnifred Stewart Association.

Care RX continues to be an integral member of the WSA family with their Annual sponsorship of \$10,000 to support internal events that our community, clients and employees enjoy. We are so fortunate to have this partnership!

Accurate Network Services has continued to support Winnifred Stewart in new and creative ways. This past year their team took part in monthly fitness challenges throughout the summer months. Accurate Network Services matched \$1 for each kilometre their employees walked, ran or biked, for a total of 9,337 km! Congratulations on all of your hard work, and thank you for your continued dedication to Winnifred Stewart and the people we support!

Our annual golf tournament, the Joey Moss Memorial Golf Classic, had another incredible year, in honour of our dear friend Joey, with nearly \$118,000 in revenue! Thank you to all of our players who contributed and to our 2021 Sponsors, The Co-Operators, Edmonton Mayfield Rotary Club, Crystal Glass, ACI Architects Inc., Complete Shipping Solutions, Auto Canada, XIX, Hello Mochi, Woodshed Burgers, Vivo Restaurant, Toast Culture, Krawford Construction, The Green Bottle Depot, Accurate Network Services, Fairfield Watson, Beam Suntory, Braithwaite Boyle, Eden Textile, GD Liquidators, Sentinel Storage, Altek Supply, Sportclips and Geoverra.

Thank you to all of our supporters of the Joey Moss Memorial Fund this year, including the Edmonton Elks Football Club and the Edmonton Oilers Community Foundation for hosting their annual 50/50 events in support of the fund.

Our organization would not be able to provide critical services in our community without your support!

Volunteers & Events

This past year also brought back many of our beloved events. With the passing of Joey Moss in October 2020, our annual golf tournament was renamed the Joey Moss Memorial Golf Classic, honouring Joey and his contributions to our community. We were delighted to see so many returning players and sponsors, including our Presenting Sponsor, the Co-Operators. Our organization also looks forward to the upcoming casino and 50/50 events, providing much-needed funding to Winnifred Stewart. Thank you to our volunteers and supporters who make these events possible!



Throughout the year, fundraising activities are implemented by the WSF team in four areas:

- **Social Enterprise**
Empties to Winn
– a beverage container recycling program
- **Fund Development**
– the development of special events, corporate sponsorships and partnerships, the pursuit of granting opportunities, direct mail campaigns and donor stewardship
- **Volunteer Services**
– the maximization of human resources through ongoing recruitment and direction of volunteers in all programs and fundraising activities
- **Public Relations & Marketing** – the cultivation of community partnerships, disability sector advocacy, communications with the public, as well as Association and Foundation branding

Empties to INN Update

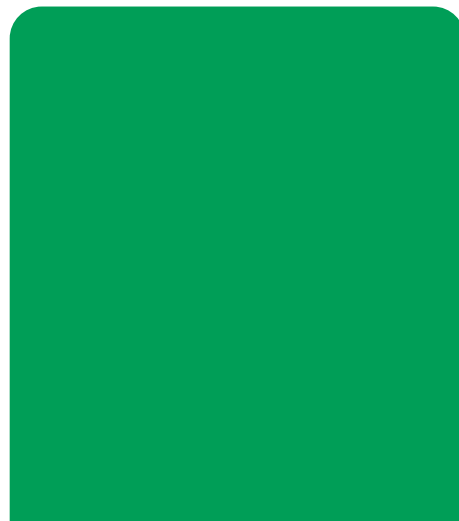
In 2022 our Empties to Winn program had another record-breaking year, collecting 7.35 million containers and generating record-breaking revenue. While the donation of empty beverage containers might seem a simple act for your household or business, in 2021-22 those contributions added up to over \$1m revenue. Our successes enabled us to continue to modernize our fleet of vehicles and keep up with rising costs, all while contributing to a substantial grant in support of the Winnifred Stewart Association. Empties to Winn is an amazing social enterprise success story, and you're a big part of that – thank you!

If you enjoy the service our Empties to Winn program provides, please continue to support us, and tell your friends, family and co-workers about the work we do in the community. Every new residential or corporate account is a big deal to us. Every donation matters. You're making an incredible difference in the lives of the individuals we support – thank you!



2021 ETW Collection Revenue

\$952,034



2022 ETW Collection Revenue

\$1,010,664

Contact Info:

Phone: 1-888-YOU-WINN (1-888-968-9466)

Email: emptiestowinn@wsaf.ca

www.emptiestowinn.com



You can make all the difference!

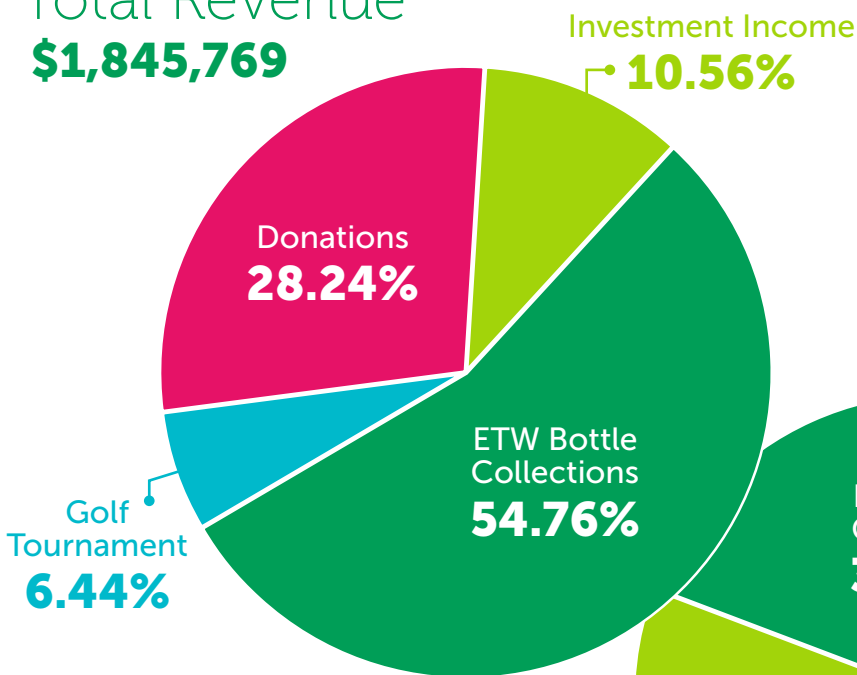
Looking for a way to make a big impact on the lives of people with developmental disabilities? Setting up monthly donations, major gifts over multiple years, or leaving a gift in your will can help WSA plan for the future, and ensure that people with developmental disabilities can lead enriched lives as integral members of their community.

To find out more about options to give, please contact our Director of Development, Candace Smallwood, CFRE at 780-974-3190 or CandaceS@wsaf.ca

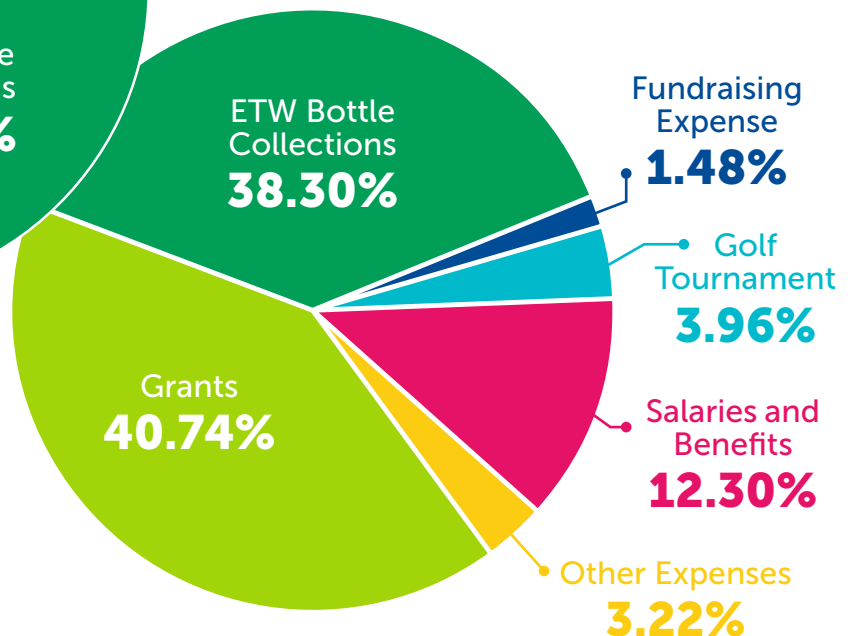


2021/2022 Fiscal Year End Financial Results

Total Revenue
\$1,845,769



Total Expenses
\$1,714,115



For full Audited Financial Statements, please visit our website

www.Winnifredstewart.com

We are honoured to recognize the following supporters through our Wall of Honour for their generosity and commitment to our Association. Without you, we would not be able to continue our work to support individuals with developmental disabilities to meet their potential and have full lives in an inclusive, supportive community.

Community supporters who have contributed \$1,000 or more to WSA are invited to join our Wall of Honour on an annual basis, in recognition of their continued support of our organization.

Lifetime Giving

Pioneer of Spirit

Winnifred Mary Stewart, RN

Founders

Margaret Barrigan
Barbara Villy Cormack
Frank Loewen
Dr Lue Russell
Milly Thomas
Jacob Werner

Champions

Wayne Gretzky
Mayor William Hawrelak
Marcel Lambert
Ernest Manning
Dudley Menzies
Abe Miller
Frank Smith

Visionary — \$250,000+

Edmonton Community Lottery Board
Edmonton Football Club
Edmonton Housing Trust Fund
Daytona Homes Master Builder
Lawrence Shopeau

Benefactor — \$100,000-\$249,999

Edmonton Community Foundation
Edmonton Oilers Community Foundation
Green Bottle Depot
Government of Alberta
Halls Remedy's Rx
Lorne & Doreen Hooper

Partner — \$50,000 -\$99,999

Alberta Beverage Container Recycling Corporation
Colin and Lila Eicher
Krawford Construction (2011) Inc
Estate of Nora Jean Lewis
Florence Dales
IKEA, LIHCAP – City of Edmonton
Rotary Club of Edmonton Mayfield
Strathcona Bottle Depot
Estate of Charles A Welbourn

Category Changes

Visionary

Edmonton Oilers Community Foundation

Partner

Stan & Kathy Kisko

Builder

R Ian Barrigan
Accurate Network Services

Contributor

Malcolm D J Stewart
Automotion Automotive Repairs
Ed Croken
Fairfield Watson & Company Inc
Colin & Barbara Keylor
The Stair Shop

New Inductees

Contributor

Matt & Amy Bohn

Supporter

7 Summit Snacks
ACI Architects Inc.
Adam Walker
Agnes Fisher
Al Carlson
Alan & Marion Hobbs
Alan & Yvonne Stern
Alan Dooley
Albert & Karen Chrumka
Alberta School Employee Benefit Plan
Alec Chichak
Alice Berry
Allan & Denise Griffin
Allan & Nancy McC Calder
Allan & Jean Warrack
Allen & Sue Evaniew
Allison Theman
Ann Dawrant
Anne Henderson
Anonymous
Arlene Chapman

Arnold & Debbielee Capiuk
Auto Canada
B H Lukiw
Barb Krahn
Barb Saint
Barbara Bell
Barbara Sykes
Beam Suntory
Bernadette Lafleur
Bernadette Townsend
Betty Gillis
Betty Sveinson
Bev Riediger
Bill & Lanna Kelly Fund
Bill & Linda Hoffman
Bonnie Schulha
Braithwaite Boyle
Brian H McDonald
Brian Miles
Bruce Aubert
C A Stuart
Carol Mclaughlin
Carol Schmitt
Carolyn Pratt
Cate Wilson
Catherine Armstrong
Cathy & R Chapelsky
Cathy Christie
Charlotte Rode
Claude Croteau & Nicole Bugeaud
Cloud Nine Pajamas
Complete Shipping Solutions
Cornelis Labots
Crystal Glass
Jim & Cynthia MacDonald
Dan Block & Robyn Eeson
Darwin G Pearson
David D Cass & Carol E Cass
David Embury
David R Bundle
David Verbicky
Debbie S Plato
Delia Vaughan
Dennis Fedor
Diane Beaudin
Dolores Noga
Don & Shari Chandler

Don Hazlett	Intact Insurance Company	Kennedy Jensen	Phil Doroschuk
Donald & Lorna Kramer	Irene Fehr	Kenneth & Kathy Goble	R N Fotty
Donald E Jones	Irene Florence Blain	Konrad & Thea Tucker	Randall & Marlane Osgood
Donald Mychajlunow	Irene Wilson	L Lastiwka	Randy & Pat Cunningham
Donald Parks	Irmgard Teubert	L Peddicord	Ray & Pamela Roy
Dorothy Reynolds	J R Herity	Larry Nikiforuk	Ray & Judy Williams
Dorothy Sande	J T Atkinson	Laura Manchul	Ray Sheskey
Doug McDavid	Jack & Susan Wright	Leon & Faye Doty	Rees Electric Ltd
Dr. Charlene Robertson	Jack Beattie	Leslie & Dawn Finnigan	Reinhold & Julie Lutter
Dwayne Zon	Jack S. Astill	Leslie Williams	Richard Keddie
Earl R Hubert	Jackie Butlin	Linda M Youell	Rick & Connie Connery
Eden Textile	Jacqui & Kim Krahn	Lions Club of	Robert & Janet Fraser
Edmond & Orla Ryan	James Frederick	Thorsby and District	Robert & Pat McKim
Eileen Hryzulak	Jan Korner	Lori Minchau	Robert Frederick
Elaine Butler	Jane Hodges	Lorraine Dowling	Rodney R Goplin
Elaine Huston	Janelda Cornfield	Lorraine Vetsch	Ron & Barbara Norton
Elisabeth Bodner	Janet Alexander-Smith	Louise Jenkins	Ron & May Galagan
Elizabeth Galas	Janet Dormer-Lovell	Louise McBain	Ron Myers
Emil K Sabo	Janet Watkinson	Luisse Penner	Ronald Brown
Ernest Boruk	Janice Ireland	Lux Mrkt	Rosa Fisher
Ernest R Schneider	Janice Storeshaw	Lydia Calder	Ross & Mona McLennan
Ernie Kimak	Jaques & Gerdy Aarts	Mackenzie Investments	Ross Jamieson
Errol & Hazel Hancock	Jean Crozier	Maralyn Segin	Rudy & Rosemarie Seneka
Estate of Robert C Huff	Jean Duke	Marie Kramps	S Lyn Watamaniuk
Eugene & Sophie Reczynski	Jean McLeod	Mary Miller	SCM Insurance Services
Eugene Luchka	Jean Vance	Maureen Pelensky	Sharon Buckley Tkach
Ewen & Brenda Thomson	Jeanette Buckingham	Maurice & Susan McCall	Sheila Ringrose
Farah Albert	Jeff & Carrie Mattern	Maurice Fritze	Shelley Younge
FedEx Global Disbursements	Jeff & Beverly Larbalestier	Mavis Reilly	Shirley Hall
Flexxaire Inc	Jerry & Hildegard Johns	Melvyn Giggs	Sibine Sintenis
Frank & Stella Gluwchynski	Jim & Louise Kagan	Michael & Luba Bell	Smith Family
Frederick T Lupul	Jim Hawke	Michael & Susanne Hertwig-	Sophie Ogle
G D liquidators	Jim Livingstone	Jaksch	Sportclips
G Klak	Jim Sowden	Michael Kischuk	Steve & Jessie Bemount
Gail Goudreau	Joan Goldstein	Milton & Terry Teibe	Steve & Charlotte Povey
Gary Albert	Joan Sametz	Milton Andre	StorageVault
Gary & Ruth Maier	Joan Udell	Morrison Homes	Susan Draper
Gene Shymko	Joanne Ogle	MTNPK Glassware	Susan Rae
George Monilaws	Jo-anne Papadopoulos	Nancy Frederick	Suzan Shaske
George Yopyk	Joey Rosko	Nancy Kerr	Suzanne Adams
Gerald & Lynne Petherbridge	John & Colleen Madsen	Natalie Arnold	T H McRory
Gerard & Robyn Beyersbergen	John & Kathy Churchill	Neil McBain	Tak Shimizu
Gisele Pelchat	John B Devlin	Neo Juicery	Terry & Debbie Sveinson
Glenda McLaren	John Brink & Erna Dominay	Nineteen	The Green Bottle Depot
Glenn & Andrea McPherson	Brink	Norma Barber	Theresa Shirley
Gord Holt	John Shaw	Norma Smith	Tim Alexander
Gord Lambe	Jon & Sandy Iwaasa	Pam Puddicombe	Toast Culture
Gordon Mongraw	Josh Wilhelm	Pat Edge	Tom & Shauna Seip
Gordon & Dianna Millard	Judy Dickout	Pat Hagel	Tom Feehan
Gordon & Suzanne Rosko	Julius Fodor	Patricia J Cotterill	Tracy & John Albert
Graham Jones	Just Done Appliance	Patricia Takacs	Troy Brouillette
Greg & Nancy Clark	Installations	Paul & Jeanette Liber	Valerie Danis
Gregory Heaton & Helen Ward	Karen & Tyler Hauber	Paul & Mary Scott	Vance & Vivian Welch
Heather Holowatiuk	Karen Yukes	Paul Precht	Vivo
Heather Molyneux	Kathryn Reynolds	Paula Coliton	Wayne & Francine Ricard
Heather Shandro	Kathy Dempsey	Paula Ramsey	Wendy Purdon
Heather Vickar	Kathy Gallant	Pauline McCormick	Wendy Vanzandbeek
Hello Mochi	Kathy Matheson	PayPal Giving Fund Canada	William & Heather Craig
Herb Willard	Katie Walker	Peggy Allegretto	Woodshed Burger
Herbert & Joyce Cook	Ken & Kim Dreger	Peggy Humphreys	Yvonne Leslie
HUB Interational	Ken Landsiedel	Peter & Sandra McCracken	
Insurance Brokers	Ken McJannet	Peter & Marjorie Kirchmeir	





Finances

Audited financial statements for the fiscal year April 1, 2021, to March 31, 2022, are available by calling the Winnifred Stewart Association at 780-453-6707 or emailing info@wsaf.ca.

For more information or to make a donation, please contact Winnifred Stewart Foundation at 780-453-6707 or email info@wsaf.ca.

Contact Info:

Winnifred Stewart Association

11130 -131 Street
Edmonton AB T5M 1C1
Phone: 780-453-6707
Fax: 780-453-6709
Email: info@wsaf.ca

www.winnifredstewart.com

Contact:

Emily Ruttan – Chief Executive Officer
Candace Smallwood - Director of Development & Communications
Corinna Yakimowich – Director of Community Opportunities
Jennifer Deck- Director of Finance
John Alexander – Director of Business & Operations

